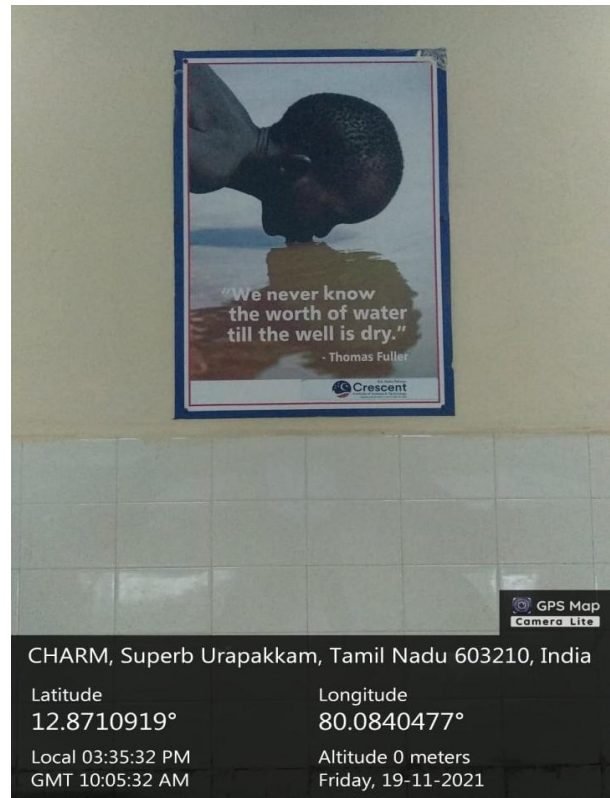


**6.5.2 a – To Promote conscious
water usage on campus and in
the wider community
(Activities on the campus)**

ACTIVITIES IN THE CAMPUS

The Institute has adopted different measures to promote the conscious water usage on campus and in the wider community.

The Institute has installed various Notice boards such as “ Save water” and various other messages promoting the conscious water usage. These boards are placed across canteen, Mens hostel and in several other locations in the campus. This will create awareness and reduce the water consumption while washing hands etc among students and various other stakeholders

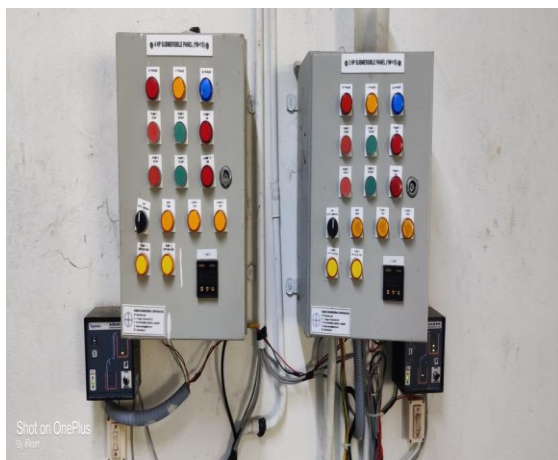


NOTICE BOARDS PROMOTING CONSCIOUS WATER USAGE



NOTICE BOARDS PROMOTING CONSCIOUS WATER USAGE

The Institute has given due consideration in promoting initiatives for saving energy and reducing water usage in buildings by employing sensors. In order to minimize water usage and also to avoid the unnecessary wastage of water, automatic waterlevel controller and automatic flush controller with sensors are being installed in the campus



AUTOMATIC WATERLEVEL CONTROLLER



AUTOMATIC FLUSH CONTROLLER

Our Institution is trying to implement smart water management system in the campus. Towards this, a proposal has been received from WEGoT Utility Solutions- Smart Water Management. This project puts forward an IoT-based solution for collecting water level from the tanks using sensors, transmitting it to a centralized server, visualizing the data through a web interface. The automated system helps the maintenance team to monitor the amount of water consumed in various buildings using the consumption details provided by the system.

Grasscrete : Method of laying Grass paver flooring ,walkways ,sidewalks and driveways to improve storm water absorption and drainage



- ❖ School of Mechanical Sciences Building
- ❖ School of Architecture Building
- ❖ New Staff Quarters Building