

# **ESTATE OFFICE**

## **Executive Summary**

# **CAMPUS INFRASTRUCTURE**

**JULY 2020**

## INDEX

<b>S.No</b>	<b>Description</b>	<b>Page No</b>
1	Estate Office – Vision & Mission	3
2	Fact Sheet	4
3	Crescent – An Overview	6
4	Estate Management – Maintenance, Procedure & Policies	7
5	Crescent – Master Plan Complex	12
6	Building – Infrastructure Details	13
7	New Projects	15
8	Academic Block and Toilet Details	21
9	Renovated Interior Works	25
10	Hostels	28
11	Staff Quarters & Guest House	30
12	Facilities in Physical Education	32
13	Crescent Medical Centre	34
14	Prayer Hall	35
15	Divyangjan Friendly Campus	36
16	Campus Signage's	38
17	Estate office Facility Management	40
18	Best Practices	41

## **ESTATE OFFICE**

### **VISION**

- B.S. Abdur Rahman Crescent Institute of Science and Technology is committed to ensure that the built infrastructure of the institute has sustainability as a core principle, both in construction and maintenance management of the campus. Estate office aspires to follow a range of sustainable design features and practices implemented to build and maintain the institute as a complete green and sustainable campus continuously.

### **MISSION**

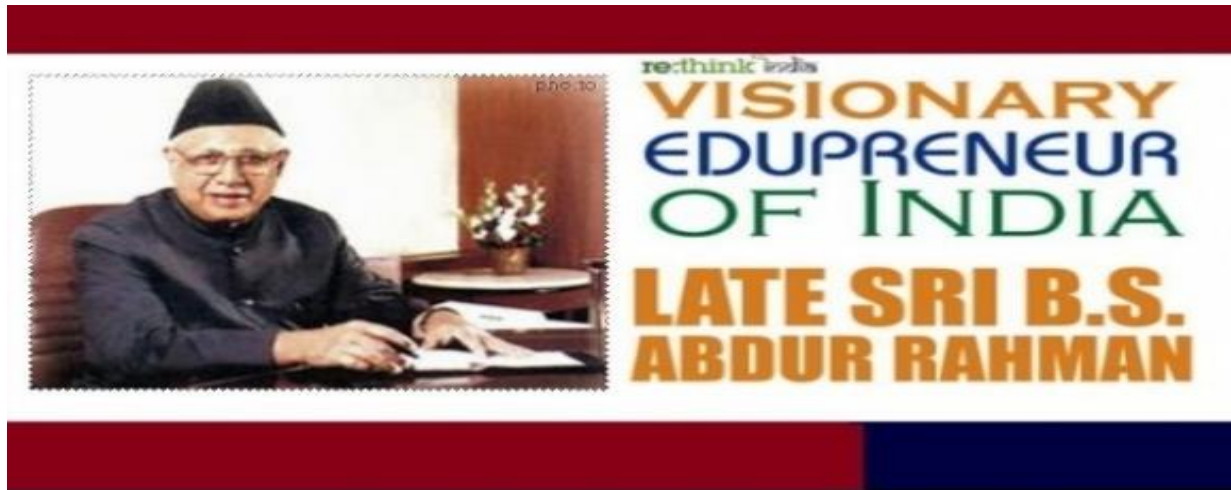
- Energy and Water Conservation Measures
- Establish on campus renewable energy sources like Roof-top Solar Power Plants, water heaters, street lights and Bio-Gas plants.
- Green Belt Development
- Solid Waste Management program to separate recyclable waste and dispose all waste in non-polluting, responsible manner.
- Getting all buildings certified as Green buildings (Gold rating) under USGBC-LEED / GBCI-EDGE / IGBC rating systems.
- Follow Sustainable Construction practices.

## 2. FACT SHEET

S.No.	CRITERION	As on September 2020
<b>I</b>	<b>Infrastructure</b>	
1	Campus Area in Acre	50.19 Acre
2	Built up Area in Sft.	15,24,024 Sft.
3	Total No.of major Buildings	20 Nos
4	Total No.of Class rooms	168 Nos
5	Total No.of Seminar Halls /Studios	50 Nos
6	Total No.of Laboratory	127 Nos
7	Total No.of Library	13 Nos
8	Total No.of Guest House	18 Rooms
9	Total No.of Staff Quarters Residence	72 Nos
10	Total Building plinth area	42564 m <sup>2</sup> (24%)
11	Greenery/Landscape/Tree Covered area	75235 m <sup>2</sup> (38%)
12	Open area (Play Ground and Road area)	77661 m <sup>2</sup> (38%)
<b>II</b>	<b>Hostel (Capacity)</b>	
1	KBA Men's Hostel	1700 Boys
2	TBAK Women's Hostel	500 Girls
<b>III</b>	<b>Total No.of Toilets</b>	<b>1392 Nos</b>
1	Institution (Academic Area)	634 Nos
2	K.B.A Men' Hostel	199 Nos
3	TBAK Women's Hostel	559 Nos
<b>IV</b>	<b>Renewable Energy</b>	
1	Roof Top Solar Power Plants	550 kWp + (100kWp - In Progress)
2	Solar Water Heaters	116 Nos of 36500Litrs capacity
3	Solar Street Lights	10 Nos of 250 Watts capacity
4	LED Lights	50.87 kW capacity
<b>V</b>	<b>Solid Waste Management</b>	
1	Eco bin (Food Waste)	250 Kg/ day
2	Bio gas Methanization Plant (Food Waste)	50 m <sup>3</sup>
3	Incinerator (Garbage)	50 Kg/hr capacity
4	Biogas Plant 15-20 m <sup>3</sup> /day gas	500 kgs/day
<b>VI</b>	<b>Liquid Waste Management</b>	
1	Sewage Treatment Plant- 2 Nos	500 KLD (each 250KLD capacity)
<b>VII</b>	<b>Potable Water Supply</b>	
1	Reverse Osmosis Drinking water Plants	8 Nos of 10,500litres per hour capacity
	Quantity of Water treated per day	48,500Litrs/per day
2	Water Treatment Plant	5 Nos
	Quantity of Water treated per day	3,35,000 Ltrs per day
3	RO Domestic units	5 Nos, 98Ltrs per hour capacity
<b>VIII</b>	<b>Rain Water Harvesting</b>	<b>All Buildings</b>
<b>IX</b>	<b>Transport</b>	
1	Total No.of AC Buses	21 Nos ( Benz, Eicher, Ashok Leyland)
2	Total No.of Non AC Buses	7 Nos (Tempo traveler, Eicher, Mazda)

3	Cars	14 Nos
4	Water Tankers	5 Nos
5	Ambulance	1 No
<b>X</b>	<b>Safety &amp; Security</b>	
1	CCTV	317 Nos
2	Fire Extinguishers	321 Nos
3	Elevators	24 Nos
<b>XI</b>	<b>Backup Power Supply</b>	
1	Sanctioned Demand From TNEB	1200 KVA
2	DG set -1	500 KVA
3	DG set -2	750 KVA
4	Total Backup Power capacity	1250 KVA (100%) Power Back up
<b>XII</b>	<b>Pollution Free Environment</b>	
1	Battery Operated Golf cart	2 Nos
2	Electric Bike	1 No
3	Eco Friendly Load vehicle	1 No
4	Bi cycles	55 Nos
<b>XIII</b>	<b>Tree plantation</b>	
1	Trees (More Varieties)	1019 Nos
2	Beema Bamboo Plants	2075 Nos
3	Total No.of tree planted	3094 Nos
<b>XIV</b>	<b>Certification &amp; Ranking</b>	
1	QS Star Rating for facilities	5 Star
2	QS I.Gauge Audit for facilities	Diamond
3	All New Buildings	Edge certified
4	UGC Swachhta	5 <sup>th</sup> Rank
5	AICTE- Smart & Clean Campus Award	Appreciated
<b>XV</b>	<b>Other Salient Facilities</b>	
1.	Canteen	
2.	Indian Overseas Bank	
3.	IOB ATM Facility	
4.	Food Outlets	
5.	Book Shop and Stationery store	
6.	Community Hall	
7.	ICICI ATM Facility	
8.	Vending Machines	
9.	Driver's Lounge	
10.	Essential Staff Quarters	
11.	Indoor and Outdoor sports facilities	

## Crescent – An Overview



### Our Founder: (Alhaj. Late. Dr. B. S. Abdur Rahman)

“An uncommon man of deep conviction and perseverance his vision runs Crescent today for the benefit of the teachers, staffs, students, alumni and the society”

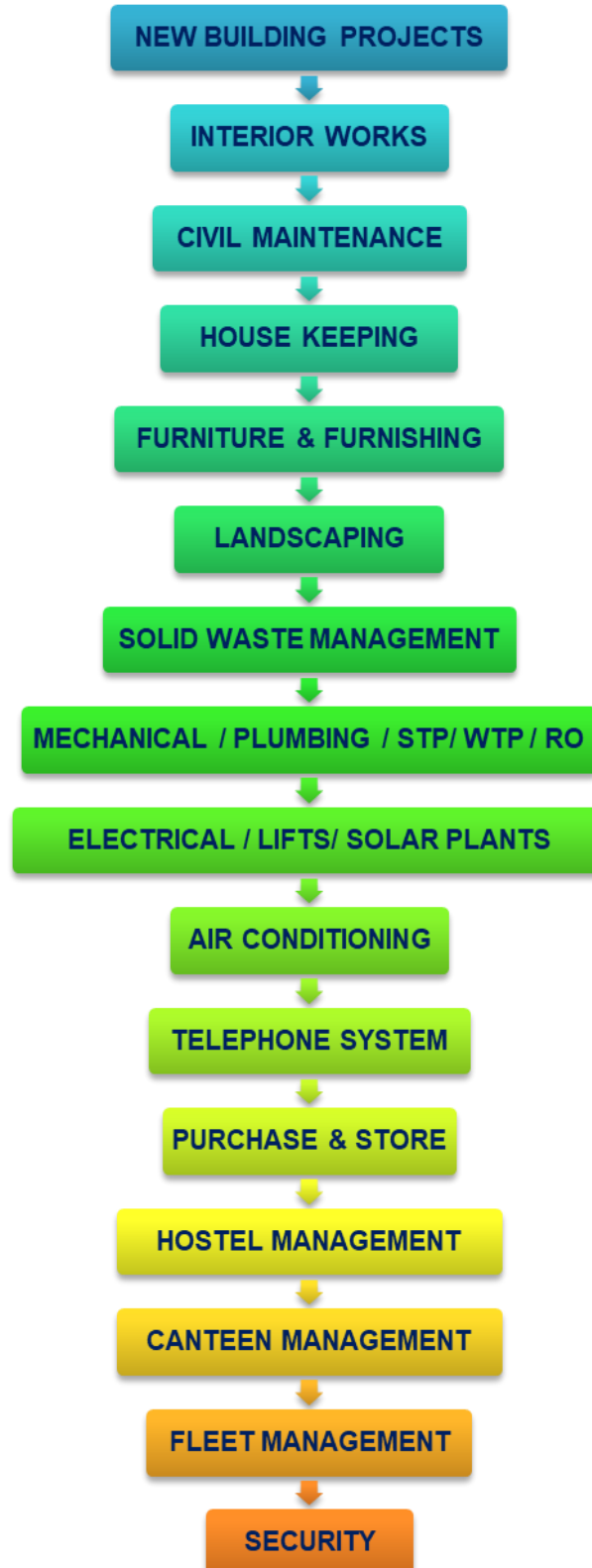
- ❖ Established in 1984 as Crescent Engineering College affiliated to the University of Madras and Anna University.
- ❖ It was upgraded and blossomed as B. S. Abdur Rahman Crescent Institute of Science and Technology (Deemed to be University) on its 25<sup>th</sup> silver jubilee year in 2009.
- ❖ The Institute is located in the state of Tamil Nadu in South India.
- ❖ 50.19 acres campus is based in what it calls "the greenest spot of Chennai", next to Aringnar Anna Zoological Park.
- ❖ Crescent Engineering College started on 12<sup>th</sup> October 1984 with intake of 180 students and sharing the facilities from existing Crescent School in the same campus.
- ❖ Formally inaugurated by M.A. Chidambaram in the presence of DOTE Director Mr. Sivalingam, Chairman, Seethakathi Trust Mr. K.T.M.S. Abdul Cader (Thaikappa) and Founder B.S. Abdur Rahman.



During Inauguration 12<sup>th</sup> October 1984

## ESTATE MANAGEMENT – MAINTENANCE, PROCEDURE & POLICIES

### FLOW CHART



## **PROCEDURES AND POLICIES FOR MAINTAINING AND UTILIZING PHYSICAL, ACADEMIC AND SUPPORT FACILITIES**

### **Policy Details:**

B.S. Abdur Rahman Crescent Institute of Science and Technology has established systems and procedures for maintaining and utilizing Physical, Academic and support facilities. Institution has regular maintenance and periodic replenishment of essential facilities.

Institution policy is to have effective mechanism for the upkeep of the infrastructure and other facilities as to have optimum utilization of the facilities in order to have effective college functioning. The Institute is pioneer in establishing procedures and policies for maintaining and utilizing physical, academic and support facilities in the campus.

**Maintenance and utilization of the Infrastructure Facilities:** The maintenance and upkeep of the infrastructure facilities are carried out with the support of the heads of the particular infrastructure department.

### **Systems for Maintenance and Utilization:**

- Budget provisions are made for new as well as old facilities, repairs and maintenance. Departmental budget by office and library is made available every year.
- Establishment/repairs and maintenance committee is formed.
- Departmental requirements for new purchases and maintenance of old is collected every year and approved in the Budget and Cost Committee meeting.
- Stakeholders' suggestions are also considered.
- Office interprets and analyses the requirement on the basis of necessity, urgency, available funds and budget is given to each Department.
- The Estate office takes a periodical review of repairs and maintenance requirements of each Departments.
- The Institution has annual maintenance contract (AMC) for physical facilities and equipment and maintained on regular basis.
- ISO 9001:2015 Certification auditors certify the proper maintenance and utilization of all the facilities in the Institution.

### **Procedures for maintaining and utilization:**

- The cleaning and the maintenance of the classrooms and laboratories are done by the non-teaching staff as per cleaning schedule which is monitored by estate office.
- Laboratory rules and regulations are prepared and displayed for students.



- The instruments are calibrated by calibration agency. For calibration 'Annual Maintenance Contract' (AMC) is given to various vendors.
- The Institution has adequate number of computers with IT facilities maintained by Computer Maintenance Service Provider.
- The college website is maintained regularly by website provider.
- Maintenance of electrical equipment's is regularly done through service agencies visit on call basis.
- Rain water harvesting system helps in the maintenance of the garden.
- Pest control is also carried out at regular intervals.
- All the facilities like fitness center, sports facility, Medical health care center and parking facility is maintained on regular basis.

## **MAINTENANCE**

Estate office with in-house and outsourced strength of 407 staff manages the day-to-day maintenance activities to keep all systems and services healthy at all times.

The estate office carries out various activities in the following divisions:

- Event Management
- New Building Projects
- Interior works
- Civil Maintenance
- House Keeping
- Furnishing & Furniture
- Landscaping
- Solid Waste Management
- Mechanical/Plumbing/STP/WTP/RO
- Electrical/Lifts/Solar Plants
- Air conditioning
- Telephone System
- Hostel Management
- Canteen Management
- Event Management
- Fleet Management
- Security

**The staff strength details:**

S.No	Staff	Strength (Nos)
1	Office staff	11
2	Maintenance & Others	13
3	Engineering – Civil	5
4	Plumbing/STP	19
5	Engineering –Electrical	14
6	Transport	56
7	Gardener/Landscaping	18
8	Men’s Hostel Staffs	94
9	Women’s Hostel Staffs	29
10	Solid Waste Management	9
11	Security staff	35
	<b>Total</b>	<b>303</b>

**Outsourced Staff**

S.No	Staff	Strength (Nos)
1	Housekeeping (Hometech)	104
	<b>Total</b>	<b>104</b>

The entire team is managed by a Senior General Manager, Deputy Director and Senior Manager – Construction for effective management.

**Complaint Redressal:**

Various levels of complaint redressed are in place to address the issues raised by students and staff with regard to maintenance and upkeep of the infrastructure. Complaints are received through telephone extensions, emails, letters, WhatsApp and also directly in person.

All efforts made to address the complaints in a reasonable time and the closure of complaints is updated to the concerned person.

**Preventive Maintenance:**

Preventive Maintenance checks are carried out as per predefined frequency schedule to ensure power supply, standby power supply, water supply, elevators, Air conditioning, Firefighting Systems, First Aid Kits, Sewage Treatment Plant, and Water Treatment Plant are always in good working conditions. Routine cleaning activities are carried out as daily basis and periodically.

Near 100% uptime is maintained in providing power supply, standby power supply, water supply and Elevators services.

#### **Annual Maintenance Contract:**

The operations and maintenance by the Estate Office team is supported by required Annual Maintenance Contracts. There are Annual Maintenance Contracts entered into and currently live for the following systems;

- Housekeeping
- Generators
- Solar Power Plants
- Air Conditioner
- Elevators
- CCTV Camera
- Intercom system
- Laundry Service for hostels
- Canteen operations
- Book Shop
- Transport buses and vehicles

#### **Purchase Procedures:**

Materials required for maintenance of infrastructure is processed through a 5-member Budget and Cost Committee with final approvals from the Registrar and the Vice Chancellor.

#### **Budget Allocation:**

Budget allocation is done for Operation & Maintenance, continual improvement renovation works and new building projects every year. A budget proposal is submitted to Registrar and is approved by the Registrar, the Vice-Chancellor and the Board of Management after scrutiny. The Estate office plans and implements their activities in line with the approved Budget.

## CRESCENT MASTER PLAN COMPLEX

- ❖ The campus is a longish trapezium in shape about 50 acres in extent with the axis East West and the Western side abutting the Grand Trunk Road, and the northern side abutting a 50 feet road to Kelambakkam connecting the Grand Southern Trunk Road. Campus is a sloping one from the G.S.T Road down towards the South East.



Type	Area	Unit	%
Total Land area	50.19	Acres	
Landscape	19	Acres	<b>37.16%</b>
Building	12	Acres	<b>24.62%</b>
Open ,Play Ground & Road	19.19	Acres	<b>38.23%</b>

## Building - Infrastructure Details

S.No	Name of the Building	Built ups area in sft.	Covered area
1	Men's Hostel Annexure	23,398.20	G+2 (RCC)
2	Mosque (college)	10,554.20	G+1 (RCC)
3	P.G. Hostel	49,445.20	G+3 (RCC)
4	Men's Hostel Dining Hall (Old)	21,596.40	G+1 (RCC)
5	Men's Hostel Dining Hall (New)	4,536.00	G (GI Sheet)
6	Men's Hostel Main Building	107,395.60	G+3 (RCC)
7	Men's Hostel New Block (A)	38,141.00	G+6 (RCC)
8	Men's Hostel New Block -B	38,141.00	G+6 (RCC)
9	Men's Hostel New Block - C	38,181.49	G+6 (RCC)
10	Men's Hostel New Block - D	38,141.53	G+6 (RCC)
11	Mechanical Lab - I	3,744.30	GI sheet roof
12	Mechanical Lab - II	3,743.20	GI sheet roof
13	Workshop - I	3,739.00	GI sheet roof
14	Workshop - II	3,745.80	GI sheet roof
15	First Year Block	45,454.00	G+3 (RCC)
16	Community Hall	2,350.70	GI sheet roof
17	Estate Office	5,138.70	G+2 (RCC)
18 a	Canteen	5,505.70	G (AC sheet)
18 b	Canteen	8,500.00	G GI Sheet
19	PED Directors Office	6,564.60	G+2 (RCC)
20	R &D Lab	686.60	G (RCC)
21	Power Room	1,468.40	G (RCC)
22	Power Room extension	5,850.00	G+2 (RCC)
23	MBA Block	69,074.40	G+2 (RCC)
24	Survey Lab	582.80	G RCC
25	Main building + Annex	135,172.40	G+3 (RCC)
26	Principal Quarters	3,177.80	G+1 (RCC)
27	Professors Quarters - 1	9,548.40	G+2 (RCC)
28	Staff Quarters (AP)- 2	6,183.90	G+2 (RCC)
29	Staff Quarters - 3	2,343.40	G+1 (RCC)
30	Staff Quarters - 4	2,365.40	G+1 (RCC)
31	Staff Quarters - 5	5,676.60	G+1 (RCC)
32	Staff Quarters - 6	2,906.40	G+2 (RCC)

33	Ladies Hostel Main Block	39,234.80	G+3 (RCC)
34	TBAK - Hostel (Annex)	32,371.60	G+3 (RCC)
35	Ladies Hostel Prayer Hall	682.80	G GI Sheet
36	Ladies Hostel Dining Hall	1,000.00	G GI Sheet
37	College Auditorium	27,542.80	G +2 (RCC)
38	Library & Computer Science Block	85,298.00	G+3 (RCC)
39	School of Architect	20,267.00	G+3 (RCC)
40	Data Centre Adjacent to Science Block	4,800.00	G+3 (RCC)
41	New staircase adjacent to Science block	380.00	RCC
42	New Work shop Automobile Engine lab1	3,300.00	G I sheet
43	New Automobile shed 2	3,300.00	G I sheet
44	Arabic College	22,408.00	G+1 (RCC)
45	Arabic College Hostel	28,637.40	G+1 (RCC)
46	School of Life sciences Block	58,000.00	G+7 (RCC)
47	School of Mechanical science block	135,000.00	G+7 (RCC)
48	VC Villa	4,300.00	G+1 (RCC)
49	Hostel STP(250KLD)	1,600.00	GI sheet
50	Staff Quarters wing 1	75,000.00	G+9 (RCC)
51	Ladies Hostel block Extension phase 1	80,000.00	G+8 (RCC)
52	Ladies Hostel block Extension phase 2 under construction	70,000.00	G+9 (RCC)
54	Civil Lab & class room	8,000.00	G (RCC)+1 P.F
55	New Store room	2,700.00	GI sheet
56	School of Architecture block extension	98,000.00	G+7 (RCC)
57	ATM & Book Shop	1,000.00	GI Sheet & RCC
58	MBA Block 3rd floor class room	3,137.00	3 F- Prefab
59	Parents waiting hall in men's Hostel	1,500.00	G - Prefab
60	Drivers Lounge	611.00	G - Prefab
61	Indoor Stadium	1100.00	G - Prefab
62	Essential Staff Quarters (GFRG)	5800.00	G+1(RCC)
	<b>Total</b>	<b>15,18,023.52</b>	

**Total Built-up Area: 15, 18,024 sq.ft.**



## Campus Entrance



## New Projects

### School of Life Sciences Building (2013)

Built up Area: 58000 sft. (G+7)

Project Cost: Rs. 11.5 Crores



### School of Mechanical Sciences Building (2014)

Built up Area: 1,35,000 sft. (G+7)

Project Cost: Rs. 30 Crores



Published in International Architectural Design Magazine (DOMEX)



**New Staff Quarters (2015)**  
Built up Area: 75000 sft. (G+9)  
Project Cost: Rs. 17 Crores



**New Ladies Hostel Building (2015)**  
Built up Area: 80000 sft. (G+7)  
Project Cost: Rs. 16.5 Crores





**School of Architecture Building (2016)**

Built up Area: 98000 sft. (G+7)

Project Cost: Rs. 23 Crores



**Vice Chancellor's Villa (2014)**

Built up Area: 4300 sft.

Project Cost: Rs. 1.3 Crores





**KBA Men's Hostel A, B, C & D (4) Blocks Building (2009)**

Built up Area: 152604 sft.  
Project Cost: Rs. 23 Crores



**Crescent Innovation and Incubation Council (2018)**

Built up Area: 23398 sft. (G+2)  
Renovated at a cost: Rs. 25 Lakhs





**Structural Engineering Laboratory**

## New Projects with GFRG Technology



**Essential Staff Quarters**



**Parents Waiting Hall**



**Model House**

**Insulated concrete forms: GFRG Technology  
(Design and Developed by Dept. of Civil Engineering)**

### ACADEMIC BLOCK DETAIL AS ON 17.03.2020

S.No.	Block	Class room	Seminar Hall	Laboratory	Library	Toilet
1	Computer Science Block	3	5	35	2	32
2	Electrical Science Block	29	3	20	3	31
3	MBA	23	3	18	0	20
4	Basic Science Block	15	0	4	0	32
5	Pharmacy Block	2	0	9	0	20
6	Life Science Block	22	1	8	1	37
7	Mechanical Science block	34	8	15	2	113
8	Architecture Block	15	23	5	3	36
9	Convention Centre	0	4	1	0	36
10	Structural Engineering Block	7	0	1	0	0
11	School of Islamic Studies	12	1	1	1	12
12	Service complex (Law Department)	6	2	0	1	6
13	Workshop Sheds	0	0	6	0	0
14	Power room	0	0	2	0	2
15	PED Block	0	0	2	0	2
	<b>Grand Total</b>	<b>168</b>	<b>50</b>	<b>127</b>	<b>13</b>	<b>379</b>

### TOTAL TOILET DETAILS

S.No	Block wise Particulars	Urinal	Hand Wash	W/C	Indian Toilet
1	Auditorium Block	15	26	16	29
2	Main Block	26	20	6	24
3	MBA Block (CBS)	10	15	8	11
4	Science Block (CSE)	32	23	7	25
5	Basic Science Block	20	22	5	27
6	Pharmacy Department	13	21	6	19
7	Mechanical Science Block	76	81	89	0
8	Life Science Block	32	33	37	0
9	New Architecture block	23	9	24	0
10	Common Toilet Near Ground			10	
11	Arabic College and Hostel				44
	<b>Total toilet Nos</b>	<b>247</b>	<b>250</b>	<b>208</b>	<b>179</b>
	<b>University Total rest room</b>				<b>634</b>
	<b>Ladies Hostel Common &amp; attached toilet</b>				<b>199</b>
	<b>Men's Hostel common &amp; attached toilet</b>				<b>559</b>
	<b>Total Toilet in Campus</b>			<b>Nos</b>	<b>1392</b>



Rest Rooms details as per NBC					
S.No	Fixtures	Non Residential		Residential	
		Male	Female	Male	Female
	Student strength	3587	1624	1500	400
1	Water closets	90	65	188	67
2	Ablution tap	72	32	30	8
3	Urinals	179	0	60	0
4	Wash basins	60	41	188	67
5	Bath/Shower	0	0	188	67
6	Drinking water tap	72	32	30	8

Ratio Details				
S.No	Location	Gents		Ladies Toilet
		Urinal	Toilet	
1	Institute	1:23	1:28	1:7
2	Men's Hostel	1:10	1:6	-
3	Women's Hostel	-	-	1:3

**Table 11 Schools and Educational Institutions**  
(Clause 4.2.5.1)

Sl No.	Fixtures	Nursery School	Non-Residential		Residential		
			Boys	Girls	Boys	Girls	
(1)	(2)	(3)	(4)	(5)	(6)	(7)	
i)	Water closets	1 per 15 pupils or part thereof	1 per 40 pupils or part thereof	1 per 25 pupils or part thereof	1 per 8 pupils or part thereof	1 per 6 pupils or part thereof	
ii)	Ablution tap	One in each water closet	One in each water closet	One in each water closet	One in each water closet	One in each water closet	
		1 water tap with draining arrangements shall be provided for every 50 persons or part thereof in the vicinity of water closets and urinals					
iii)	Urinals	—	1 per 20 pupils or part thereof	—	1 per 25 pupils or part thereof	—	
iv)	Wash basins	1 per 15 pupils or part thereof	1 per 60 pupils or part thereof	1 per 40 pupils or part thereof	1 per 8 pupils or part thereof	1 per 6 pupils or part thereof	
v)	Bath/showers	1 per 40 pupils or part thereof	—	—	1 per 8 pupils or part thereof	1 per 6 pupils or part thereof	
vi)	Drinking water fountain or taps	1 per 50 pupils or part thereof	1 per 50 pupils or part thereof	1 per 50 pupils or part thereof	1 per 50 pupils or part thereof	1 per 50 pupils or part thereof	
vii)	Cleaner's sink	←—————→				1 per each floor	

**NOTES**  
 1 Some WCs may be Indian style, if desired.  
 2 For teaching staff the schedule of fixtures to be provided shall be the same as in case of office building.

Bureau Under the License from BIS for LARSEN AND TOUBRO CONSTRUCTION



**Convention Centre**



**Auditorium**



**Seminar Hall I**



**Seminar Hall II**



**Seminar Hall III**



- ❖ B.S. Abdur Rahman Crescent Institute boasts of a very large Convention Centre which houses an auditorium of 1500 seating capacity and three sophisticated seminar halls of seating capacity 300, 200 and 100. (Constructed in 2004).
- ❖ Set in bewitching landscape, this wonderful building has lofty pillars whose beauty is enhanced in turn by a series of small arches. As one enters the Convention Centre, a breath-taking expansiveness fascinates the visitor.
- ❖ The auditorium accommodates 1500 persons in 2 galleries on the ground and mezzanine levels. Equipped with state-of-the-art sound and light systems. The centre has been designed for the best acoustics and space utilization.

## Major Buildings in Campus

Electrical Sciences block  
 Convention Centre  
 Computer Science block  
 Management block  
 Pharmacy block  
 Basic Science Block  
 Architecture block  
 Mechanical Science block  
 Life Science Block  
 Islamic Studies block  
 Estate Office  
 Men's Main block  
 Men's Hostel A Block  
 Men's Hostel B Block  
 Men's Hostel C Block  
 Men's Hostel D Block  
 Men's Hostel PG Block  
 Women's Hostel Main block  
 Women's Hostel Annexure Block  
 Women's Hostel New Block

## Land Area Detail

S.NO.	CAMPUS LAND AREA DETAIL	
1	Campus Area	50.19 Acre
		2,03,186 m <sup>2</sup>
		21,86,267 Sft.
2	Total Built up Area	1,41,637.91m <sup>2</sup>
		15,24,024 Sft.
3	Building plinth area	12 Acre
		48,564 m <sup>2</sup>
		5,22,549Sft
	Total Area in Percentage	24%
4	Greenery and landscape	19 Acres
	38% of Total area 203186 x 0.38	75,235 m <sup>2</sup>
		8,09,529Sft
5	Open area, Tree corner & Road area	19.19 Acres
	203186 x 0.50	1,54,555 m <sup>2</sup>
		16,63,012Sft
	Total Area in Percentage	76%
	Landscape/Greenery/Trees	75235 m <sup>2</sup>
	Open area, Playground & Road	77661 m <sup>2</sup>



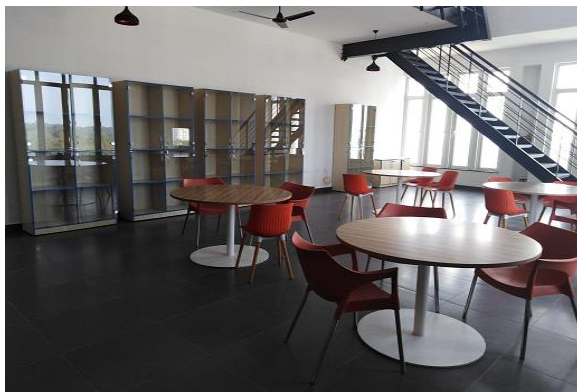
## Renovated Interior Works (Few)



**Crescent School of Business**



**CSB Smart Class room**



**CSB Library**



**CSB Lobby**



**CITL**



**CIIC**



**CFL**



**MBA Library**



**Robo Laboratory**



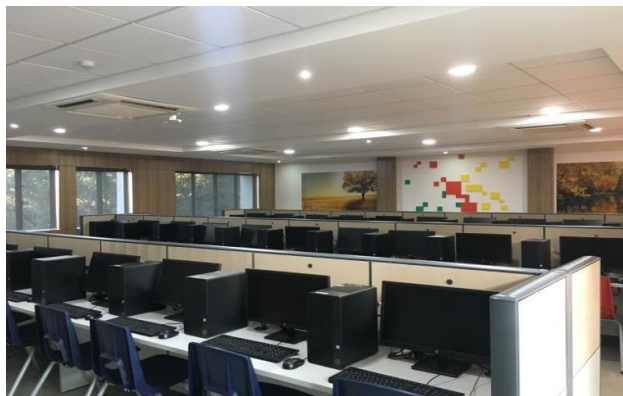
**Robo Lab Interior**



**Bio - Laboratory**



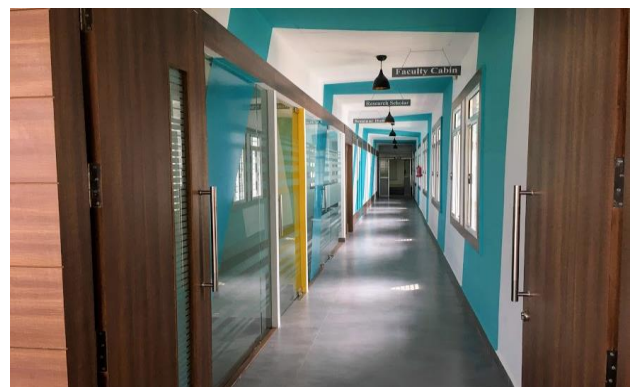
**CIIC Lobby**



**New IBM Computer lab @ 3rd floor Computer Sciences Block**



**MBA Seminar Hall**



**MBA Department**





**MBA Reception**



**MBA Syndicate Room**



**New Drawing Hall**



**New Dining Hall in KBA Men's Hostel Mess**



**CSB New Hostel room in KBA Men's Hostel**

## HOSTELS (Boys & Girls)

Separate Men's Hostel complex with six multi-storeyed blocks containing 492 rooms shall accommodate 1708 boys including 54 AC rooms. Another complex with three multi-storeyed blocks containing 200 rooms shall accommodate 500 girls including 27 AC Rooms.



Kilakarai Buhari Aalim Men's Hostel  
(KBA Men's Hostel)

### Number of Blocks - 06

Block	No of Rooms	No. of Seats
A	81	276
B	75	292
C	75	300
D	75	300
Main Block	106	352
PG Block	32	188
Total	444	1708

### Air Conditioning Rooms

Description	Rooms	No. of Seats
4 Bed Sharing Rooms	28	112
3 Bed Sharing	8	24
2 Bed Sharing	18	36
Total	54	172

<b>Total No. of seats</b>	<b>:</b>	<b>1708</b>
Total No. of A/C Rooms seats	:	172
Total No. of Non A/C Rooms seats	:	1536

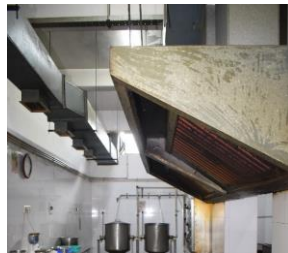




Thassim Beevi Abdul Kader Hostel for Women  
 (TBAK Women's Hostel)

Hostel Room with AC & Capacity Details		
Description	Rooms	Capacity
Main Block	30	136
Annex Block	44	168
Annex Block with AC	7	21
New Block	99	155
New Block with AC	20	20
Total	200	500

**Cooking and Washing Equipments**



## HOSTEL FACILITIES:

1. 24 Hours power back-up through central power distribution system
2. Separate dining hall for Veg & Non-Veg
3. Reading Room
4. Recreation Hall with DTH facilities
5. Mosque/Prayer Hall
6. GYM
7. Computing Facility,
8. Swimming Pool
9. Elevator facility
10. WIFI connectivity
11. CCTV Cameras
12. Water Treatment Plants
13. RO Drinking water
14. Outdoor /Indoor sports facility
15. Solar water Heaters
16. Laundrette Service.
17. Dish Wash Machine
18. Palmyra Cafe
19. Parents Waiting Lounge
20. Essential Staff quarters

## STAFF QUARTERS AND GUEST HOUSE

The residential accommodations of teaching and non teaching staff are adequately furnished with following facilities.

1. 24 hrs Power backup.
2. Wi-Fi Connectivity
3. Cable, DTH Connection
4. Community Centre,
5. Vehicle Parking space for 4 wheeler and 2 wheeler
6. Elevator facility
7. Water Treatment Plant
8. Solar Water Heaters
9. RO Drinking Water
10. Children's Park

<b>Staff Quarters Details</b>		
<b>S.No</b>	<b>Name</b>	<b>Qty</b>
1	Professor Quarters	6
2	AP Quarters	6
3	Tenement Quarters	4
4	New Staff Quarters	44
5	Selaiyur Quarters	12
	<b>Total</b>	<b>72</b>

<b>Guest House Details</b>		
<b>S.No</b>	<b>Name</b>	<b>Qty</b>
1	Estate Office Guest House	3
2	Guest House in New quarters	3
3	New Guest House	4
4	Auditorium Guest House	2
5	Ladies Hostel Guest House	2
6	Men's Hostel Guest House	4
	<b>Total</b>	<b>18</b>



**New Staff Quarters**



## FACILITIES IN PHYSICAL EDUCATION



**Sports Pavilion**



**Main Play Ground**



**Foot Ball Ground**



**Volley Ball Ground**



**Basket Ball Court**



**Ball Badminton Court**



**Fitness Center**



**Swimming Pool**



## Facilities in Physical Education



**Sports Village**



**Top view**



**Indoor Games Hall**



**Table Tennis**



**Basket Ball Court - 1**



**Basket Ball Court - 2**



**Carom**



**Shuttlecock Court**



## MEDICAL CENTRE

Crescent Medical Centre – 10-bed for Men’s and 6-bed for Women’s - with 24x7 residential doctors and staff nurses. Medical Centre have all Medical facility like General ward, Ambulance with 24x7 driver, first aid kit and necessary equipments for any emergency purpose. Our Institute vehicles and laboratories also have First Aid kit box. A tie-up with AG Hospital in Tambaram is in place for further treatments. The important some of the instruments are given below



**Male Ward = 10 Beds, Female Ward = 4 Beds, Isolation Ward = 6 Beds, Total 20 Beds**



**Ambulance**

**Nebulization Kit**

**Pulse oxymeter**



**Suction Apparatus , ECG Instrument, Automated External Defibrillator (AED), Emergency Monitor**

## **PRAYER HALL**

In campus, two prayer halls, one in Men's Hostel and another in Institute campus. Women prayer hall is separately available in Hostel, Convention Centre & Community hall.



**Prayer Hall 1**



**Prayer Hall 2**



**Community Hall (For Girls)**



**DIVAYANGJAN – FRIENDLY CAMPUS**



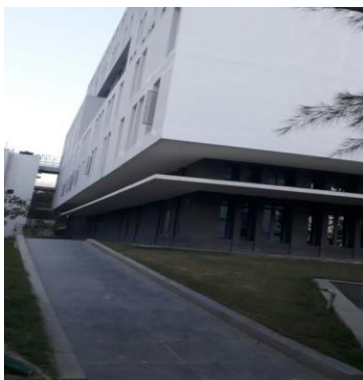
**E S Block**



**Auditorium**



**C S Block**



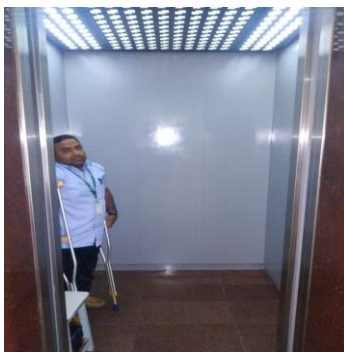
**LS Block**



**M S Block**



**B S Block**



**Elevator-1**



**Elevator-2**



**ES Block Ground Floor**

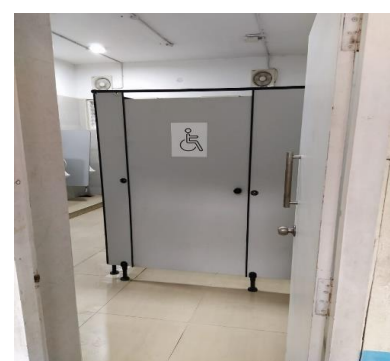
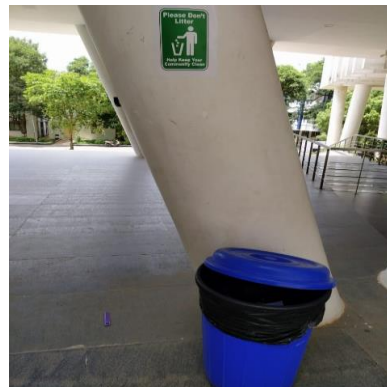


**Convention Centre Rest room and Wash basin**





## CAMPUS SIGNAGES



## OTHER COMMON FACILITIES IN CAMPUS

- a. Canteen
- b. Departmental Store
- c. Indian Overseas Bank
- d. IOB - ATM Facility
- e. Food Outlets
- f. Book Shop and Stationery store
- g. Community Hall
- h. Indoor and Outdoor sports facilities
- i. Vending Machines
- j. ICICI ATM Facility
- k. Air quality Monitor Station
- l. Rain Gauge Monitor Centre





## ESTATE OFFICE FACILITY MANAGEMENT

### Our Team:



### Staff contacts details for complaints:

S.No	Department	Name	Contact No	Email ID	Extension No
1.	Estate Office Help Desk (Complaints)			<a href="mailto:helpdesk.estateoffice@ crescent.education">helpdesk.estateoffice@ crescent.education</a>	150
2.	Housekeeping	Mr. Basheer	8667018252	<a href="mailto:basheeruddin.nt@ crescent.education">basheeruddin.nt@ crescent.education</a>	164
3.	Transport /Vehicle booking	Mr. Elamurughu	9600642004	<a href="mailto:elamurughu@ crescent.education">elamurughu@ crescent.education</a>	167
4.	Event Food arrangement	Mr. Shanmugam	9500190387	<a href="mailto:shanmugam@ crescent.education">shanmugam@ crescent.education</a>	155
5.	Electrical work, LIFT, AC & Intercom	Mr. Ramkumar	9941602400	<a href="mailto:ramkumar@ crescent.education">ramkumar@ crescent.education</a>	166 & 152
6.	Plumbing, RO water	Mr. Rajiv Gandhi	7397788034	<a href="mailto:rajeev.gandhi@ crescent.education">rajeev.gandhi@ crescent.education</a>	
7.	Civil Work	Mr. Seetharaman	7397788027	<a href="mailto:seetharaman@ crescent.education">seetharaman@ crescent.education</a>	163
8.	Security service	Mr. Ramesh.s	9344055701	<a href="mailto:Ramesh.s.nt@ crescent.education">Ramesh.s.nt@ crescent.education</a>	
9.	Men's Hostel	Mr. Vetrivendhan	9445749942	<a href="mailto:manager.menshostel@ crescent.education">manager.menshostel@ crescent.education</a>	136
10.	Women's Hostel	Ms. Fathima	7397788047	<a href="mailto:asstmanager.ladieshostel@ crescent.education">asstmanager.ladieshostel@ crescent.education</a>	140
11.	Landscaping & Helpdesk	Mr. Habeebsulthan	7397788041	<a href="mailto:habeesulthan@ crescent.education">habeesulthan@ crescent.education</a>	150
<b>FOR ESCALATION</b>					
1.	General Manager	Mr. V.N.A. Jalal	9444020384	<a href="mailto:vnajalal@ crescent.education">vnajalal@ crescent.education</a>	248
2.	Deputy Director (CDM)	Dr. A.K. Kaliluthin	9486075577	<a href="mailto:deputydirector.cdm@ crescent.education">deputydirector.cdm@ crescent.education</a>	165
3.	Senior Manager - Construction	Er. K.S. Jamaludeen	7397788025	<a href="mailto:jamal@ crescent.education">jamal@ crescent.education</a>	249
4.	GM Office	Mrs. Rahmath Khatun	7397788030	<a href="mailto:facilities@ crescent.education">facilities@ crescent.education</a> <a href="mailto:rahmathkhatun@ crescent.education">rahmathkhatun@ crescent.education</a>	167



## BEST PRACTICES

- ❖ Roof top solar power plant's capacity is 50% of the sanctioned demand
- ❖ **Green campus**
- ❖ Rainwater Harvesting
- ❖ **Biogas plant**
- ❖ Solar water heaters
- ❖ **Sewage treatment plant**
- ❖ Solid, Liquid & E- waste Management
- ❖ **No plastic zone**
- ❖ Several measures have been initiated for Sustainability and Environment consciousness
- ❖ **Green Building Certification**
- ❖ Recycling of papers through ITC
- ❖ **Differently-abled friendly campus**
- ❖ Zero discharge of waste
- ❖ **Adoption of nearby villages**
- ❖ Supporting nearby village Panchayats and Government Organisations

\*\*\*\*\*